

National
Schools
Interoperability
Program

NSIP

NSIP Vendor Forum

EduTech 2017

Agenda

- Welcome & Introductions
- NSIP Update
- Learning Services Architecture Roadmap: Jurisdictional Implementation Update
- Vendors Update
- Wrap up and networking

NSIP Update

NSIP Update

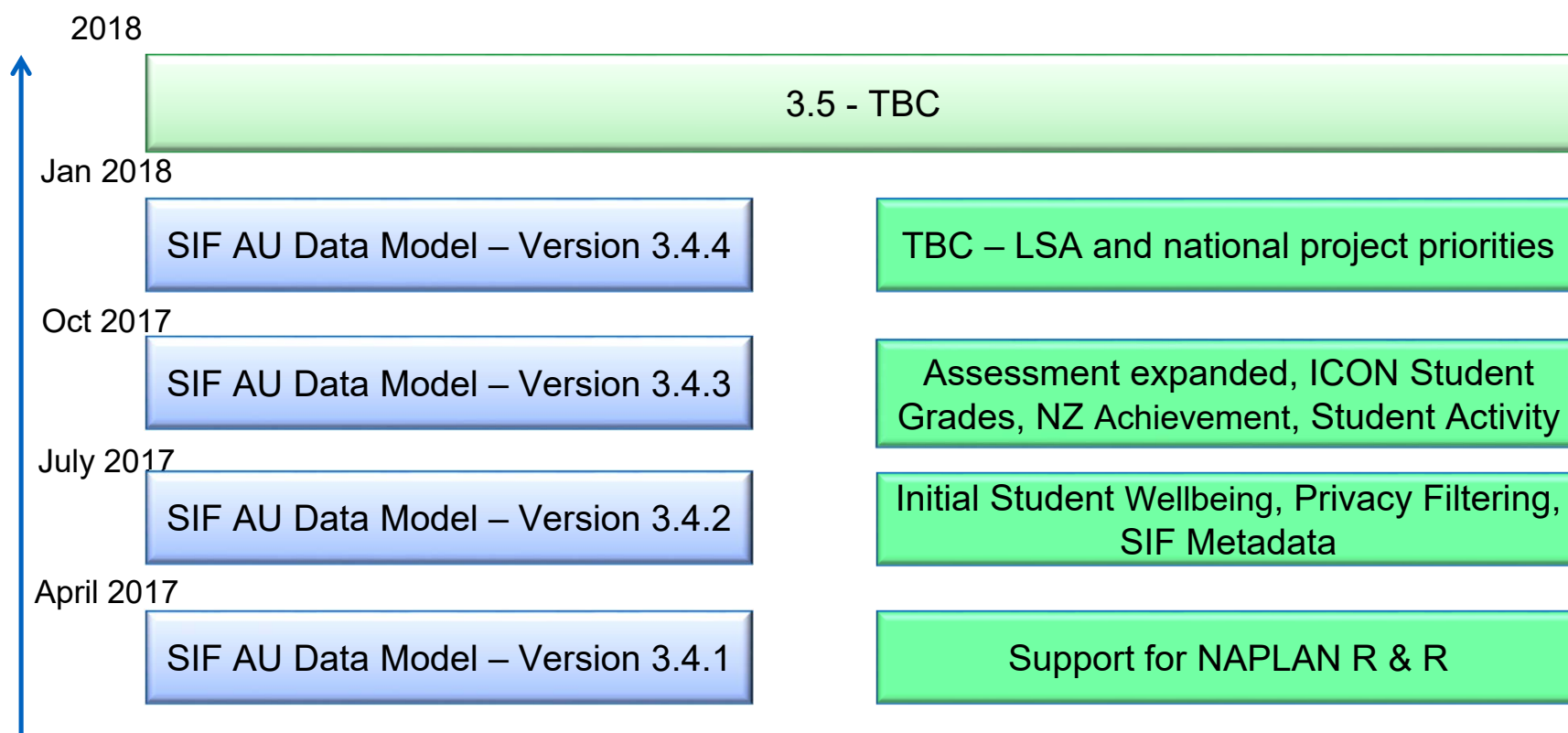
- SIF AU Data Model
 - Release Schedule
 - Student Wellbeing
 - MS DataSync approach
- New NSW releases
- NAPLAN
- HITS 2
- NIAS
- Training & Events

NSIP Update – SIF AU Data Model

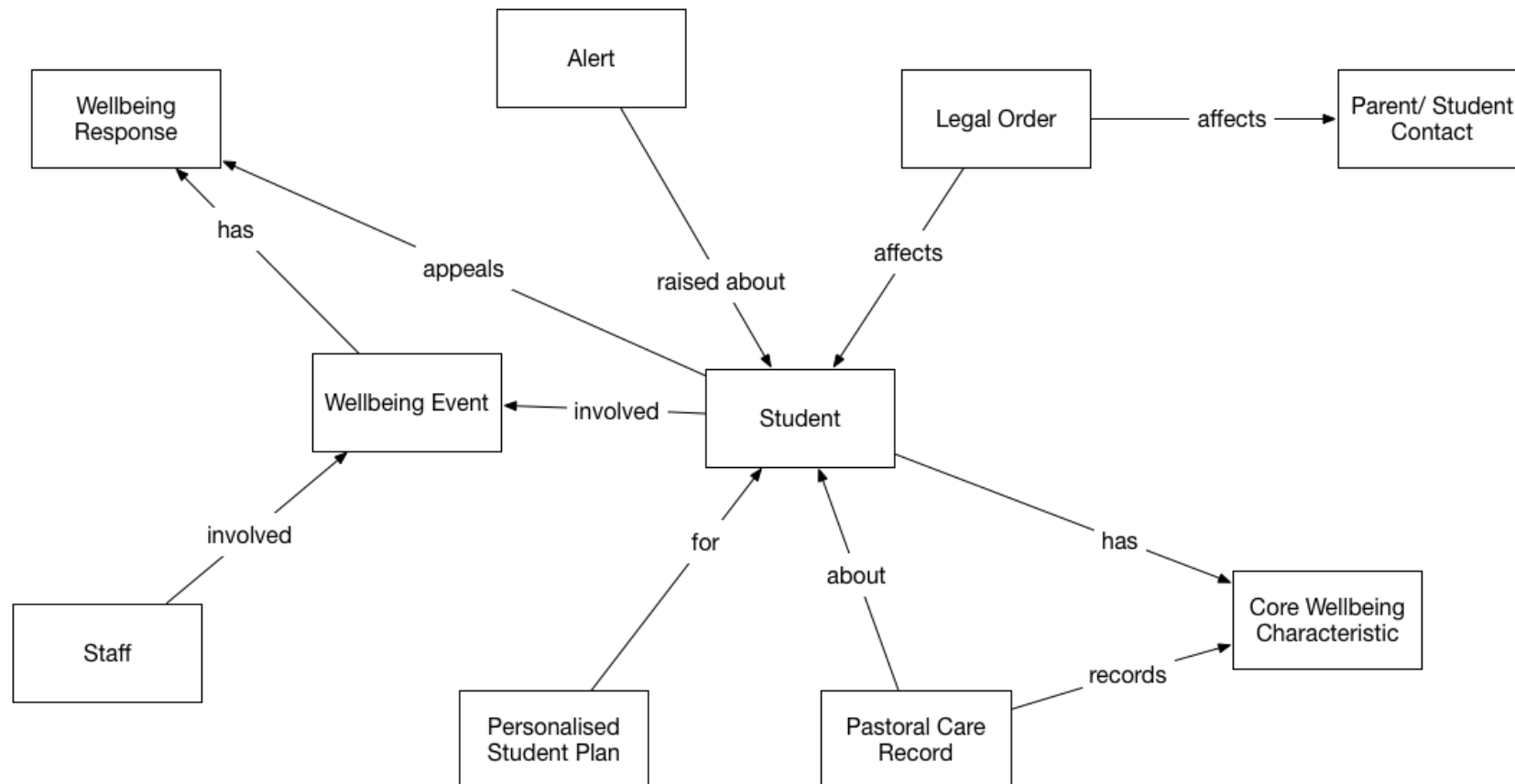
- Data Model Updates
 - Release Schedule
 - Student Wellbeing
 - Preliminary MS-DataSync mapping

Draft Release Schedule

Namespace remains 3.4 until 3.5 release



Wellbeing Progress



- 2nd Workshop in WA conceptually covered above

Wellbeing Progress

- Wellbeing Objects in draft
- Currently in review after WA Workshop
- Drafts to be circulated to all interested parties and DSWG next week
- Draft Specification to be developed post reviews
- WA will trial draft specification before formal release

Interesting possibilities

- Looking at ways to integrate SIF Data Model to MS Schools Data Sync

```

<xs:complexType name="MSDataSyncSchoolType">
  <xs:annotation>
    <xs:documentation>This is a wrapper for MS Data Sync School</xs:documentation>
  </xs:annotation>
  <xs:sequence>
    <xs:element name="SyncSource_SchoolId" type="LocalIdType"/>
    <xs:element name="SchoolNumber" type="StateProvinceIdType"/>
    <xs:element name="ACARAId" type="xs:normalizedString"/>
    <xs:element name="StateId" type="StateProvinceIdType"/>
    <xs:element name="LowestGrade" type="YearLevelType"/>
    <xs:element name="HighestGrade" type="YearLevelType"/>
    <xs:element name="SchoolPrincipalSyncSourceId" type="LocalIdType"/>
    <xs:element name="SchoolPrincipalName" type="NameOfRecordType"/>
    <xs:element name="SchoolPrincipalEmail" type="EmailType"/>
    <xs:element name="Address" type="AddressStreetType"/>
    <xs:element name="City" type="xs:normalizedString"/>
    <xs:element name="State" type="StateProvinceType"/>
    <xs:element name="Country" type="CountryType"/>
    <xs:element name="Zip" type="xs:normalizedString"/>
    <xs:element name="SchoolZone" type="LocalIdType"/>
  </xs:sequence>
</xs:complexType>
<xs:element name="EducationSchool" type="MSDataSyncSchoolType"/>

```

NSIP Update – NSW Releases

- NSW Data Hub now in production with TimeTable services
- Attendance successfully tested and scheduled for move to production
- Support from vendor community has been critical

NSIP Update – NAPLAN

- Testing continues in 2017, roll-out to commence from 2018
- Integration approach for 2018 likely to be co-ordinated via Test Admin. Authorities (NESA, QCAA, VCAA etc) as per plans for 2017 – TBC
- Defined integration points currently are:
 - Student registration data
 - Results and Reporting data
- Registration dataset similar to that required for paper based NAPLAN
- Results and reporting dataset:
 - Rich, to accommodate branched adaptive testing
 - Available in XML
 - Incorporated into the SIF AU data model
- Data sets and technical specifications available via NSIP's github:
 - <https://github.com/nsip/registration-data-set>
 - <https://github.com/nsip/naplan-results-reporting>

NSIP Update – Privacy

- Data privacy an essential part of any data discussion
 - Data: More of it, more mobile, more distributed, moving across more boundaries
 - AU data model analyzed with default privacy sensitivity ratings allocated,
 - A draft SIF technical controls approach document developed
- Privacy workshop held 31st May
 - Broad attendance including AG, ESA, NSW, QLD, VIC, TAS, SA, WA, NT, Catholic sector, Test Administration Authorities, Vendors
 - Session covered business drivers and origins of U.S. Student Data Privacy Consortium (SDPC) who have established standardized bi-directional vendor agreements
 - Supported with toolsets, website
 - Great take-up, interest from school, districts and vendors
 - Key drivers include reducing risk, improving transparency and minimizing cost
 - Drivers are reflected in Australian context
 - NSIP keen to pursue validation of SDPC model in Australia, in-line with data sharing use cases as per the Learning Services Architecture.
 - NSIP seeking nominees to scope out the project, establish desktop ‘paper pilots’
 - Vendor engagement key to ensuring draft baseline agreements are mutually beneficial

NSIP Update – HITS 2

- New release of the online Hub Integration Testing Service
- New user interface
- Single location for access to national data-exchange use cases and developer testing environment

The screenshot shows the HITS Dashboard interface. The top navigation bar includes 'Start here / Databases' and a search field. The main content area is titled 'Create Database' and features several sliders for configuring database parameters: Schools (0-5), Students (0-500), Teachers (0-75), and Classrooms (0-20). Below these sliders are checkboxes for various data options: teaching groups, Timetable example data, Grading for each class/student, Contacts information and photos, Accounts and Invoices, NAPLAN sample, and HMAC (auth). A 'Create' button is located at the bottom of the form.

Below the form is a section titled 'Existing Databases' with a search field and a table listing database entries.

ID	Name	When	Schools	Students	Teachers	Status	Options
abf02cd54806477e82ce941ef30e1117	2 schools test	2017-05-17T01:36:16.000Z	2	231	36	complete	custom
665421e1812b460d9d09ed1c2f12f438	enrolment 3 schools	2017-05-15T01:56:40.000Z	0	0	0	error	enrolment

NSIP Update – NIAS

- NIAS Services to support NAPLAN data exchanges are available from NSIP GitHub for:
 - Registration data validation
 - Results Reporting data exploration, report generation and data QA

The screenshot shows a web browser window displaying the NSIP NIAS interface. The page title is "NSIP NIAS" and the main heading is "NAPLAN Results Reporting Data". Below the heading, there is a search box and instructions: "Select a school to review by typing letters from the school name or numbers from the school ACARA ID (ASL number) in the search box. Once a school is selected choose the report type you are interested in. Each report type presents a summary table. Use the radio buttons at the top of the table to filter the results. Click on a table row to see the extended data set for that row." The search box contains "21213 - Lincoln x72861 Secondary College". Below the search box, there are four tabs: "SCORE SUMMARY", "DOMAIN SCORES", "PARTICIPATION", and "CODEFRAME". The "SCORE SUMMARY" tab is active, showing a table with columns: "Level", "Domain", "School Average", "Jurisd. Average", "National Average", "Top National 60%", and "Bottom National 60%". The table has two rows of data.

Level	Domain	School Average	Jurisd. Average	National Average	Top National 60%	Bottom National 60%
3	Grammar and Punctuation	407	397	396	410	389
3	Numeracy	408	394	399	425	377

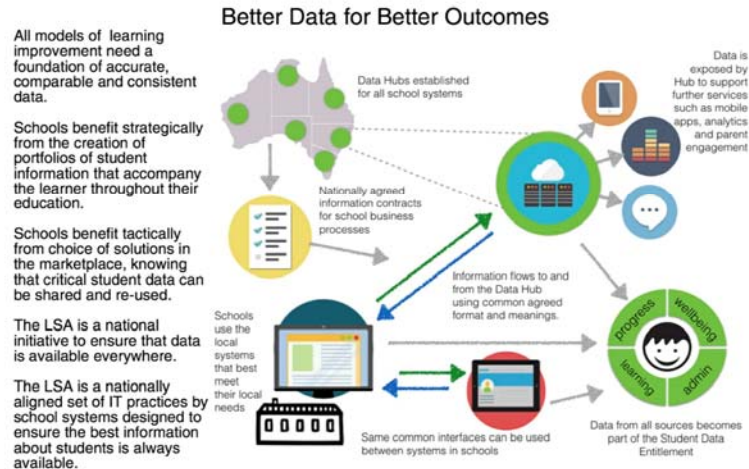
Training & Events

- SIF Training in WA – 5th & 6th July
- SIF Community Meeting, Melbourne Nov/Dec, will include SIF Training
-

Learning Services Architecture: Jurisdictional Implementation Update

The National Roadmap reflects the endorsed commitment of all States & Territories in supporting the LSA

The Learning Services Architecture 2017 Roadmap



information contracts

E Enrolment Foundational data about a Student: Who they are, what class they are in, who teaches them what, significant relationships, identity information	W Wellbeing Events & outcomes in the social and health aspects of a student's learning includes records of behaviour, pastoral care records, formal legal and medical plans, records of participation and extra-curricular activities and achievements.
At Attendance Capturing the roll for classes and whole schools. Used in school, school system and national reporting. Key lead indicator for early diagnostics of issues that may be affecting student reporting	Tt Timetable The foundational dataset for understanding the processes of a running school. What is being taught, where, by which teachers and to which students, critical for resource planning and allocation
As Assessment Data about how a student is progressing. Multiple sources of formative and summative data that allow better understanding of student progress. Needs to carry curriculum context when appropriate, but be flexible enough to capture ad-hoc and experimental outcomes.	F Finance Secure, consistent exchange & management of: Purchase Orders, Invoices, Payments and General Ledger transactions.
N NAPLAN Registration of students for NAPLAN Online. Rich results data from NAPLAN online; complex adaptive data, single nationally consistent dataset.	Cp Curriculum Planning Teaching design, lesson planning and resource location for effective teaching.
	More... In 2018 we'll be adding contracts for Extra Curriculum Support and Professional Development.

Contact us: www.nsip.edu.au

The Learning Services Architecture is supported by all States and Territories and roll-out is underway.

Independent Schools benefit from the consistent interfaces demanded by the State & Territory implementations. Talk to NSIP to find out more about how the LSA benefits you as an independent school.

Indicative timescales for government schools as at June 2017. Roadmap will be updated and available from NSIP in 6-month review increments

	2017	2018	2019	2020 >	
ACT		E At As W F	N		
NSW	E At Tt As	W	N		
NT	E At As F	W	N		
QLD		Cp At	N As		
SA		E At Tt F As N	W		
TAS (Final Order of Service Delivery To Be Determined)			N E At As W Tt F		
VIC		E At Tt W F N			
WA		W E At	N		
Foundation	Needs assessments, business case, requirements gathering, procurement and architecture provisioning. All of the necessary prep to implement LSA-aligned systems.	Transition	Core legacy systems are migrated to standards compliant replacements. Key systems interactions & data feeds are aligned to standards. This prepares for migration to full Data Hub offering.	Operation	Data Hubs expose and manage information contract based exchanges, unified interface for all 3rd-party integration. Some jurisdictions are able to move directly to Operation.
				Elaboration	With Data Hubs in place an ongoing process of implementing more information-contract exchanges in response to user and system needs.

LSA: Jurisdictional Implementation Update

State and Territory
Overview

LSA: Jurisdictional Implementation Update ACT

- ACT is underway with implementing a new suite of central services.
- Key requirement of the tender for those services was ability of suppliers to demonstrate support for SIF-based data exchanges.
- SIF interfaces are therefore available internally within the service suite for integration.
- Roll-out of services in production begins Q1 2018 for:
 - Enrollment, Attendance, Assessment and Wellbeing
 - Finance and NAPLAN services planned for 2019
- Build-out of Data-Hub access to key data services for third-parties currently planned to commence Q2 2018 based on business demand.

LSA: Jurisdictional Implementation Update **NSW**

- NSW Data Hub is operational
- Timetable services for third-party data exchange now live in production
- Attendance services ready to move to production
- Next service candidates are Assessment, Q1 2018, and Wellbeing Q4 2018

LSA: Jurisdictional Implementation Update

NT

- NT is evaluating its current portfolio to assess the most effective service consolidation and data warehousing support for all sectors
- Implementation of Data-Hub services will be evaluated during this period, and any supporting build-out required would commence from Q3 2019

LSA: Jurisdictional Implementation Update

QLD

- QLD Data Hub will be operational from Q1 2018
- Curriculum Planning will be the first services exposed in Q1
- Followed in 2018 by Attendance and NAPLAN support
- Assessment services currently planned for Q1 2019

LSA: Jurisdictional Implementation Update

SA

- SA are undertaking a procurement process for suite of core student management systems
- As with ACT, requirement that suppliers conform to national SIF data exchanges
- Roll-out of services in production begins Q1 2018 for:
 - Enrolment, Attendance, TimeTable, Finance, Assessment & NAPLAN
 - Wellbeing to roll out from Q2 2019
- Build-out of Data-Hub access to key data services for third-parties currently planned to commence Q2 2019 based on business demand.

LSA: Jurisdictional Implementation Update

TAS

- TAS is currently has a SIF-enabled systems infrastructure
- TAS are gathering business requirements and preparing for an entire systems refresh activity, which will include a migration of services to SIF 3
- Preparation, needs analysis and systems procurement or build-out will continue until end of Q2 2018
- Implementation of new systems infrastructure will commence Q3 2018
- Order of delivery of services on the new systems infrastructure will be decided based on business and user needs

LSA: Jurisdictional Implementation Update

VIC

- VIC is undertaking planning and preparation work for their future data systems, which will include the eduHub Data Hub
- Planning and preparation will continue through to Q2 2018, some initial development of eduHub infrastructure has already been completed
- Roll out of new data services will commence Q2 2018 as integration services using SIF data from third parties
- Full Data Hub exchanges to be implemented from Q3 2020

LSA: Jurisdictional Implementation Update

WA

- New future services infrastructure is in place
- SIF-based data exchanges are core requirement
- Data Hub will be operational following broker acquisition in Q1 2018
- WA will be leading with Wellbeing services in Q1 2018
- Followed by Enrolment, Attendance and NAPLAN within 2018

Vendor Update

- Education Horizons
- Civica
- Sentral

- NSIP on LinkedIn, join our group!
- <http://www.nsip.edu.au>
- What and Who do you exchange with?